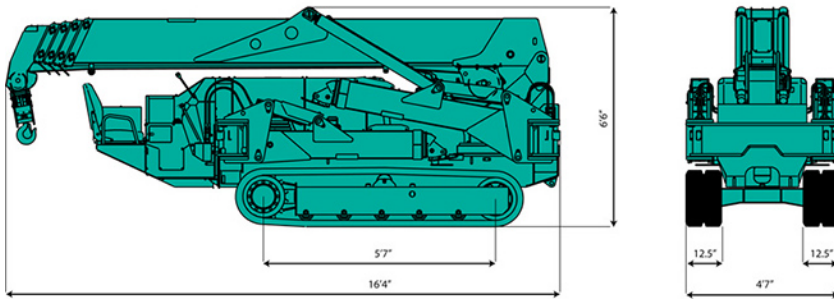


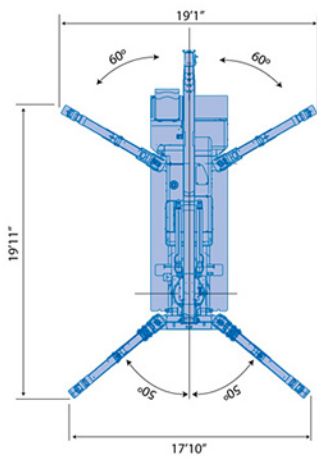
Maeda 405 C-1 Mini Crawler Crane



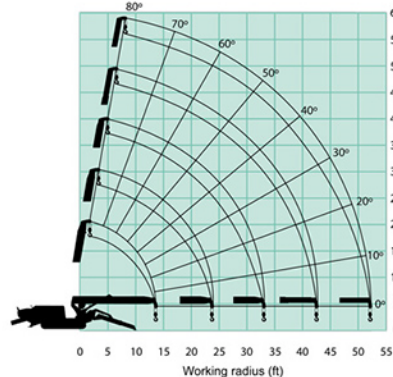
Overall Size



Outrigger Spread Dimensions



Working Range Chart



The Working Range Chart does not take into account boom deflection under load.

The maximum reach below ground level is:

Configuration	Four Part	Two Part	Single Part
Maximum reach below ground level is:	67'	138'	269'

Crane Model	MC405CRM(E)	
Maximum Capacity	8,480 LB.	
Maximum Working Radius	52.4'	
Maximum Lifting Height	55.1' Approx.	
Hook Speed	59' / Minute (4 Part / 4" Layer)	
Single Line Speed	236' / Minute - (4" Layer)	
Hoist Rope	IWRC 6 x WS(26) 8mm x 311'	
Hoist Below Grade - Maximum	1 Part Line - 269' 2 Part Line - 138' 4 Part Line - 67'	
Boom System	Boom Length Telescopic Speed Boom Type	15'6" - 54'0" 38' 6" / 41.3 Seconds Automatic 5 Section, Pentagonal Telescopic
Boom Hoist	Angle Speed	0° - 80° 17 Seconds
Swing	Radius Speed	360° 2.5 RPM
Outriggers	Type	3 Position, Lower And Extend By Direct Acting Hydraulic Cylinders, Manual Swing-Out And Pin
Travel Crawler System	Drive Travel Speed Gradability Ground Contact Ground Pressure	Hydraulic Motor, Stepless Speed Changer 0 - 2.0 Mph 20° 57" Length, 12.5" Wide 7.24 PSI Diesel Model, 7.4 PSI Electric Model (Dual Power)
Engine	Model Rated Output Fuel Tank	Yanmar 3JNV88-BPMB, 4 Cycle, Diesel, 3 Cylinder Water Cooled 29.0 hp, 21.63 kw , 29.6ps /2400 RPM 15.8 Gal.
Electric Motor (Dual Power)	Type Size	Totally Enclosed Fan Cooled Motor 7.5kw, 4P 230V, Inverter 30 hz - 60 hz
Remote Control	Standard	Cable Remote Control, Graduated Micro Speed, Load LCD Display, Outrigger Operation
Dimensions	Outriggers Retracted Outriggers Max. Pos. Outriggers Med. Pos. Outriggers Min. Pos. Net Weight	16'4" Length, 47" Width, 6'6" Height 19'11" Length, 17'10" Width Front, 19'1" Width Rear 18'7" Length, 16'1" Width Front, 17'2" Width Rear 17'3" Length, 14'3" Width Front, 15'1" Width Rear Diesel Model 12,400 Lb. -Electric Dual Power Model 12,700 Lb.
Standard Equipment	Load Indicator, Hydraulic Safety Valve, Level & Inclination Alarm, Anti Two Block, Winch Cable Warning, Emergency Shut Off, Travel Lock, Outrigger Interlock Device, Programmable Capacity Moment Limiter, Rotary Warning Light, Hour Meter, 2 Part / 4 Part Hook Block, Hook Safety Latch, Automatic Hook Storage	
Optional Equipment	Dual Power Electric Motor, Radio Remote Control, White Rubber Tracks, Single Part Ball/Hook	



The Lifting Professionals

410 Stevenson Dr • Bolingbrook, IL 60440
630-972-9199

16675 Van Dam • South Holland, IL 60473
219-972-9199

stevensoncrane.com

Maeda 405 C-1 Mini Crawler Crane

Capacity Chart

MAXIMUM Outrigger Position, 4 Part Line

Boom Length	15.5 Ft.	15.6 - 25.2 Ft.	25.3 - 35.0 Ft.	35.1 - 44.5 Ft.	44.6 - 54.0 Ft.
Radius (Ft.)	Load (Lbs.)	Load (Lbs.)	Load (Lbs.)	Load (Lbs.)	Load (Lbs.)
8.5	8480	8480			
10.0	7720	7720	6720		
11.5	6710	6710	6710		
13.0	5800	5800	5800	4960	
14.5		5220	5220	4400	2530
16.5		4490	4490	3830	2510
20.0		3680	3680	3080	2010
23.5		3000	2990	2590	1680
26.0			2570	2330	1490
30.0			1900	2060	1350
33.0			1390	1850	1240
36.0				1570	1120
40.0				1170	980
42.5				1010	880
45.5					760
49.0					620
52.0					520

MEDIUM Outrigger Position, 4 Part Line

Boom Length	15.5 Ft.	15.6 - 25.2 Ft.	25.3 - 35.0 Ft.	35.1 - 44.5 Ft.	44.6 - 54.0 Ft.
Radius (Ft.)	Load (Lbs.)	Load (Lbs.)	Load (Lbs.)	Load (Lbs.)	Load (Lbs.)
8.5	8480	8480			
10.0	7720	7720	6720		
11.5	6710	6710	6710		
13.0	5800	5800	5800	4960	
14.5		5080	5080	4220	2530
16.5		4150	4150	3610	2510
20.0		3130	3130	2920	2010
23.5		2530	2440	2350	1610
26.0			2020	2010	1440
30.0			1600	1590	1230
33.0			1180	1200	1090
36.0				1100	990
40.0				950	860
42.5				790	770
45.5					670
49.0					530
52.0					450

MINIMUM Outrigger Position, 4 Part Line

Boom Length	15.5 Ft.	15.6 - 25.2 Ft.	25.3 - 35.0 Ft.	35.1 - 44.5 Ft.	44.6 - 54.0 Ft.
Radius (Ft.)	Load (Lbs.)	Load (Lbs.)	Load (Lbs.)	Load (Lbs.)	Load (Lbs.)
8.5	8480	8480			
10.0	7720	7720	6720		
11.5	6710	6710	6710		
13.0	5800	5800	5800	4960	
14.5		4890	4890	4220	2530
16.5		3710	3710	3600	2510
20.0		2590	2580	2570	1950
23.5		1840	1930	1820	1580
26.0			1670	1560	1240
30.0			1270	1210	1020
33.0			960	980	960
36.0				880	860
40.0				800	750
42.5				730	660
45.5					580
49.0					470
52.0					380

PICK & CARRY MAX. CAPACITY: 1,100 lb., 15.5' Max. Boom, 7.4' Max. Radius

The rated capacity chart is based on the actual working radius including boom deflection. The weight of the hook block (110 lb.) must be included as part of the load shown in the rated capacity chart. Due to wire rope strength limitations, when using two part or single part hooks, use the appropriate four part rated capacity chart above but with a maximum load of: **Two Part – 4,280 lb., Single Part – 2,200 lb.**

This rated capacity chart is supplied for reference only. Operator and all personnel must refer to the actual crane rating capacity chart to determine allowable machine lifting and operating procedures.

We are constantly improving our products and reserve the right to change design and specifications at any time. **ASME B 30.5 2004. ISO 9001 compliant**



The Lifting Professionals

410 Stevenson Dr • Bolingbrook, IL 60440
630-972-9199

16675 Van Dam • South Holland, IL 60473
219-972-9199

stevensoncrane.com