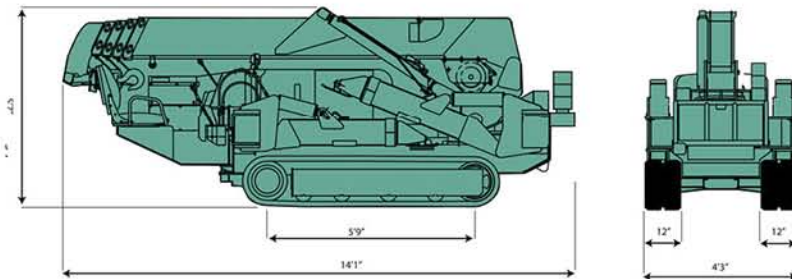


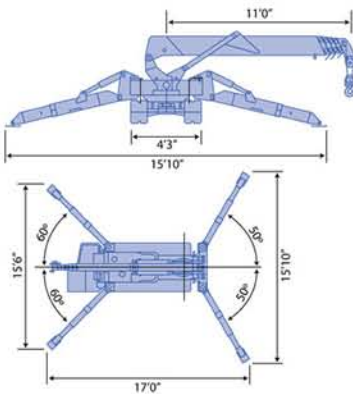
Maeda 305 C-2 Mini Crawler Crane



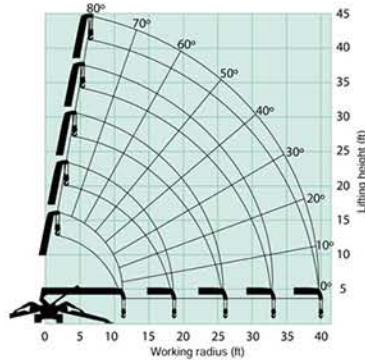
Overall Size



Outrigger Spread Dimensions



Working Range Chart



The Working Range Chart does not take into account boom deflection under load.

The maximum reach below ground level is:

Four Part	Two Part	Single Part
53'	105'	211'

Crane Model	MC305CRM(E)-2
Maximum Capacity	6,560 LB.
Maximum Working Radius	39.8'
Maximum Lifting Height	41' Approx.
Hook Speed	44' / Minute (4 Part / 4 th Layer)
Single Line Speed	177' / Minute (4 th Layer)
Hoist Rope	IWRC 6 x WS(26) 8mm x 240'
Hoist Below Grade - Maximum	1 Part Line - 211' 2 Part Line - 105' 4 Part Line - 53'
Boom System	Boom Length 12'1" - 41'0" Telescopic Speed 29' / 26 Seconds (40 Sec. Electric) Boom Type Automatic 5 Section, Pentagonal Telescopic
Boom Hoist	Angle Speed 0° - 80° 14.5 Seconds (20 Sec. Electric)
Swing	Radius Speed 360° 2.4 RPM (1.6 RPM Electric)
Outriggers	Type 3 Position, Lower And Extend By Direct Acting Hydraulic Cylinders, Manual Swing-Out And Pin
Travel Crawler System	Drive Hydraulic Motor, Stepless Speed Changer Travel Speed 0-1.7 Mph Gradability 23° Ground Contact 5'9" Length, 12" Wide Ground Pressure 5.40 PSI Diesel Model, 5.59 PSI Electric Model (Dual Power)
Engine	Model Yanmar 3TNV76, 4 Cycle, Diesel, 3 Cylinder Water Cooled Rated Output 20.38 hp, 15.2kw, 20.7ps /2500 RPM Fuel Tank 10.5 Gal.
Electric Motor (Dual Power)	Model Toshiba IKKH-FBK8G-4P-5.5kw Type 3 Phase, 230v, 60 hz, 5.5kw 4p, Invert Controlled 30hz -60hz
Remote Control	Standard Cable Remote Control, Graduated Micro Speed, Load LCD Display, Outrigger Operation
Dimensions	Outriggers Retracted 14'1" Length, 4'3" Width, 5'7" Height Outriggers Max. Pos. 17'0" Length, 15'10" Width Front, 15'6" Width Rear Outriggers Med. Pos. 16'0" Length, 14'6" Width Front, 14'0" Width Rear Outriggers Min. Pos. 15'0" Length, 13'2" Width Front, 12'5" Width Rear Diesel Model 8,800 Lb. --- Electric Dual Power Model 9,100 Lb.
Standard Equipment	Load Indicator, Hydraulic Safety Valve, Level & Inclination Alarm, Anti Two Block, Winch Cable Warning, Emergency Shut Off, Travel Lock, Outrigger Interlock Device, Programmable Capacity Moment Limiter, Rotary Warning Light, Hour Meter, 2 Part/ 4 Part Hook Block, Hook Safety Latch, Automatic Hook Stowage
Optional Equipment	Dual Power Electric Motor, Radio Remote Control, White Rubber Tracks, Single Part Ball/Hook



The Lifting Professionals

410 Stevenson Dr • Bolingbrook, IL 60440
630-972-9199

16675 Van Dam • South Holland, IL 60473
219-972-9199

stevensoncrane.com

Maeda 305 C-2 Mini Crawler Crane

Capacity Chart

MAXIMUM Outrigger Position, 4 Part Line

Boom Length	12.1 Ft.	12.2 - 19.5 Ft.	19.6 - 26.7 Ft.	26.8 - 33.8 Ft.	33.9 - 41.0 Ft.
Radius (Ft.)	Load (Lbs.)	Load (Lbs.)	Load (Lbs.)	Load (Lbs.)	Load (Lbs.)
8.0	6560	6560			
8.5	6280	6280	5000		
10.0	5160	5160	4590		
11.5		4370	3690		
13.0		3810	3200	2380	
14.5		3350	2830	2200	1740
17.0		2830	2340	1890	1370
18.0		2640	2180	1790	1270
20.0			1890	1670	1120
23.0			1600	1470	940
25.5			1390	1300	850
29.0				1120	760
32.5				970	680
36.0					610
39.5					570

MEDIUM Outrigger Position, 4 Part Line

Boom Length	12.1 Ft.	12.2 - 19.5 Ft.	19.6 - 26.7 Ft.	26.8 - 33.8 Ft.	33.9 - 41.0 Ft.
Radius (Ft.)	Load (Lbs.)	Load (Lbs.)	Load (Lbs.)	Load (Lbs.)	Load (Lbs.)
8.0	6560	6560			
8.5	6260	6260	5000		
10.0	5100	5100	4530		
11.5		4310	3690		
13.0		3750	3160	2330	
14.5		3140	2790	2120	1710
17.0		2360	2250	1840	1350
18.0		2160	2100	1760	1240
20.0			1700	1630	1070
23.0			1340	1380	900
25.5			1150	1140	810
29.0				920	710
32.5				780	640
36.0					570
39.5					550

MINIMUM Outrigger Position, 4 Part Line

Boom Length	12.1 Ft.	12.2 - 19.5 Ft.	19.6 - 26.7 Ft.	26.8 - 33.8 Ft.	33.9 - 41.0 Ft.
Radius (Ft.)	Load (Lbs.)	Load (Lbs.)	Load (Lbs.)	Load (Lbs.)	Load (Lbs.)
8.0	6560	6560			
8.5	6260	6260	5000		
10.0	5050	5050	4530		
11.5		3950	3690		
13.0		3200	3060	2330	
14.5		2600	2550	2120	1710
17.0		1970	1890	1820	1350
18.0		1800	1740	1700	1240
20.0			1430	1460	1070
23.0			1120	1160	890
25.5			950	970	810
29.0				770	710
32.5				660	640
36.0					530
39.5					460



The rated capacity charts are based on the actual working radius including boom deflection. The weight of the hook block (66 lb.) must be included as part of the load shown in the rated capacity chart.

Due to wire rope strength limitations, when using two part or single part hooks, use the appropriate four part rated capacity chart above but with a **maximum load of: Two Part - 3,200 lb., Single Part - 1,500 lb.**

This rated capacity chart is supplied for reference only. Operator and all personnel must refer to the actual crane rating capacity chart to determine allowable machine lifting and operating procedures. ASME B 30.5 2004. ISO 9001 compliant



The Lifting Professionals

410 Stevenson Dr • Bolingbrook, IL 60440
630-972-9199

16675 Van Dam • South Holland, IL 60473
219-972-9199

stevensoncrane.com