

# Stevenson Sales & Service LLC - Equipment Lineup 2009

Tow Behind Lifts							
Model	Plat Ht	Width	Cap	Pwr	Drive	Size	Reach
Bil-Jax2622T	26'0"	5'6"	440	D	P	2'6" x 4'	22'
Bil-Jax 3632T	37'6"	5'6"	507	D	P	2'6" x 4'	32'
Bil-Jax4642T	46'0"	5'6"	507	D	P	2'6" x 4'	42'
Bil-Jax 3522A	37'2"	5'6"	507	D	P	2'6" x 4'	22'
Bil-Jax 4527A	45'0"	5'6"	507	D	P	2'6" x 4'	27'
Bil-Jax 5533A	55'0"	5'6"	507	BD	P	2'6" x 4'	33'
Lightweight Self Propelled Boom Lifts							
Model	Plat Ht	Width	Cap	Pwr	Drive	Size	Reach
Bil-Jax 36 XT	37'6"	5'5"	500	BD	4R	2'6" x 5'10"	32'
Bil-Jax 45 XT	45'0"	5'6"	500	BD	4R	2'6" x 5'10"	27'
Bil-Jax 55 XA	55'3"	5'8"	500	BD	4RS	2'6" x 5'10"	33'5"
Vertical Mast Lifts							
Model	Plat Ht	Width	Cap	Pwr	Drive	Size	
Genie GR12	11'5"	2'6"	500	AB	2N	2'11" x 2'6"	
Genie GR15	14'8"	2'6"	500	AB	2N	2'11" x 2'6"	
Genie GR20	19'11"	2'8"	250	AB	2N	2'11" x 2'6"	
Haulotte Star 22J	22'2"	3'3"	441	AB	2N	3'3" x 3'8"	
Haulotte Star 26J	26'3"	3'3"	500	AB	2N	3'3" x 3'8"	
Haulotte Q29	28'7"	2'5"	351	AB	P	2'2" x 2'3"	
Haulotte Q35	35'5"	2'7"	300	AB	P	2'2" x 2'3"	
Haulotte Q40	39'1"	2'7"	300	AB	P	2'2" x 2'3"	
Electric Scissor Lifts							
Model	Plat Ht	Width	Cap	Pwr	Drive	Size	
Haulotte O1530E	14'7"	2'6"	595	AB	2N	5'8" x 2'3"E	
Haulotte O1930E	18'11"	2'6"	507	AB	2N	5'8" x 2'3"E	
Haulotte C2032E	20'3"	2'8"	770	AB	2N	8'2" x 2'7"E	
Haulotte C2632E	26'3"	2'8"	500	AB	2N	8'2" x 2'7"E	
Genie GS2032	20'0"	2'8"	500	AB	2N	8' x 2'8"E	
Genie GS2632	26'0"	2'8"	500	AB	2N	8' x 2'8"E	
Genie GS3232	32'0"	2'8"	500	AB	2N	8' x 2'8"E	
Haulotte C2247E	20'7"	3'11"	992	AB	2N	7'7" x 3'11"E	
Haulotte C2747E	26'8"	3'11"	992	AB	2N	7'7" x 3'11"E	
Haulotte C3347E	32'10"	3'11"	662	AB	2N	7'7" x 3'11"E	
Rough Terrain Scissor Lifts							
Model	Plat Ht	Width	Cap	Pwr	Drive	Size	
Haulotte C2668RT	27'1"	5'11"	1246	DB	4R	8'2" x 5'1"E	
Haulotte C3368RT	33'4"	5'11"	992	DB	4R	8'2" x 5'1"E	
Haulotte HS3388RT	32'9"	7'4"	1540	D	4RN	13'1" x 6'2"E	
Haulotte HS4388RT	42'7"	7'4"	1100	D	4RN	13'1" x 6'2"E	
Haulotte HS5388RT	52'5"	7'4"	1100	D	4RN	13'1" x 6'2"E	
Genie GS3390RT	33'0"	7'6"	2500	BDG	4R	13'5" x 6'0"E	
Genie GS4390RT	43'0"	7'6"	1500	BDG	4R	13'5" x 6'0"E	
Articulating Boom Lifts							
Model	Plat Ht	Width	Cap	Pwr	Drive	Size	Reach
Haulotte HA33JE	32'10"	4'5"	507	B	2N	2'7" x 3'11"	21'8"
Genie Z-40 23N	40'5"	4'11"	500	B	2N	2'6" x 4'8"	22'8"
Haulotte HA43JE	42'8"	4'11"	507	B	2N	2'7" x 3'11"	27'11"
Genie Z-40/25 NRJ	40'5"	4'11"	500	B	2N	2'6" x 3'10"	22'8"
Genie Z-45/25RT	45'11"	7'6"	500	BD	4R	2'6" x 6'	25'
Genie Z-45/25JRT	46'2"	7'6"	500	BD	4R	2'6" x 6'	25'1"
Genie Z-45/25DC	45'6"	5'10"	500	BD	4R	2'6" x 6'	25'
Genie Z-45/25JDC	45'8"	5'10"	500	BD	4R	2'6" x 6'	25'1"
Haulotte HA46JRT	45'11"	7'7"	507	D	4NS	2'7" x 5'11"	29'10"
Haulotte HA61JRT	61'2"	7'8"	507	D	4NS	2'7" x 5'11"	44'3"
Haulotte HA80JRT	77'5"	7'10"	507	D	4NS	2'7" x 5'11"	53'2"
Haulotte HA100JRT	97'9"	8'4"	551	D	4NS	2'7" x 8'0"	69'11"
Haulotte HA130JRT	129'7"	8'2"	507	D	4NS	2'7" x 8'0"	65'0"

Straight Boom Lifts							
Model	Plat Ht	Width	Cap	Pwr	Drive	Size	Reach
Haulotte HB40	39'7"	7'7"	507	D	4R	2'2" x 7'7"	35'1"
Haulotte HB44J	44'1"	7'7"	507	D	4R	2'2" x 7'7"	40'4"
Haulotte HB62	61'8"	8'2"	507	D	4R	2'8" x 5'11"	56'3"
Haulotte HB68J	67'7"	8'1"	507	D	4R	2'8" x 5'11"	64'0"
Aichi ISR70J	69'0"	8'1"	500	D	C	2'7" x 8'0"	60'0"
Haulotte HB76J	76'5"	8'1"	507	D	4R	2'8" x 5'11"	55'5"
Haulotte HB86TJ	86'0"	8'2"	507	D	4R	2'7" x 5'11"	74'2"
Haulotte HB135JRT	134'6"	8'4"	507	D	4RS	2'7" x 8'0"	65'7"
Material Handlers							
Model	Max Ht	Max Cap	Cap@	HReach	Cap@		
Gehl CT5-16	16'2"	5000	5000	9'8"	2200		
Gehl CT5-16T	16'2"	5000	5000	9'8"	2200		
Gehl CT6-18	17'11"	6000	6000	10'11"	2600		
Gehl CT6-18T	18'3"	6000	6000	10'7"	2600		
Gehl CT7-23	22'7"	7000	7000	13'11"	2200		
Gehl RS5-19	19'1"	5500	3000	10'10"	1850		
Gehl RS6-34	34'3"	6000	4000	23'3"	900		
Gehl RS6-42	42'0"	6600	6600	28'3"	1000		
Gehl RS8-42	42'0"	8000	7000	28'3"	1000		
Gehl RS8-44	44'0"	8000	7000	30'3"	1000		
Gehl RS10-44	44'0"	10000	8000	32'2"	1500		
Gehl DL7-44	44'3"	7000	6000	30'6"	1000		
Gehl DL9-44	44'4"	9000	7000	30'6"	1500		
Gehl DL11-44	44'4"	11000	9000	30'6"	2000		
Gehl DL11-55	55'1"	11000	6000	40'9"	2000		
Gehl DL12-40	40'4"	12000	10000	26'4"	2000		
Pettibone 744	44'4"	7000	5000	30'3"	2000		
Pettibone 944	44'4"	9000	8000	30'3"	2000		
Pettibone T944	44'6"	9000	8000	36'1"	2000		
Pettibone 1144	44'6"	11000	10000	30'3"	4000		
Pettibone 1157	57'0"	11000	10000	42'1"	3000		
Pettibone T1157	57'6"	11000	10000	48'9"	1800		
Pettibone 1530	30'10"	15000	15000	18'9"	7000		
Manitou TMT55SB	10'0"	5500	5500	3'8"	3110		
Manitou TMT55LB	11'3"	5500	5500	4'10"	2800		
Manitou MT523T	16'2"	5000	5000	9'7"	2200		
Manitou MT1745	54'5"	10000	8600	39'9"	2000		
Manitou MRT2150	67'7"	10000	5000	59'8"	1100		
Haulotte HTL9045	44'7"	9000	5550	32'2"	2200		
Haulotte HTL9055	54'10"	9000	4400	42'2"	1100		
Portable Cranes & Mini-Crawler Cranes							
	Boom	Jib	MCap	Drive			
Haulotte GH12-30	38'7"	4300	4300	DE	RT drive system		
Herkuless 311MK11	34'	8'		DE	Fits on Skip Hoist for use on/in structure		
Maeda MC285C	28'1"	N/A	6210	Crawler	Fits through 3' doorway		
Maeda MC305C	41'	N/A	6560	Crawler	Fits on Skip Hoist for use on/in structure		
Maeda MC405C	54'	14'9"	8480	Crawler	Fits on Skip Hoist for use on/in structure		
Maeda LC785	51'3"	15'5"	10800	Crawler	Mini-dozer blade & enclosed cab		
Multi-Job Loader/Backhoe							
	MHt	MCap	Cap@	HRch	Cap@		
Haulotte MJX990	19'1"	5500	3000	10'10"	1850		

# MANITRANSIT TRUCK-MOUNTED FORKLIFT

## TMT 55FL-4W Series



- 4-Way Steering
- One-side Unloading
- Lift Capacity: 5,500 lb.
- Maximum Lift Height: 135 in.
- Maximum Forward Reach: 58 in.
- Hydrostatic Transmission
- Three Wheel Drive



Front tires shown are not available in U.S.

410 Stevenson Drive • Bolingbrook IL 60440 • 630-972-0330 • 630-972-0630  
 16675 Van Dam Rd • South Holland IL 60473 • 219-972-0330 • 630-972-0630

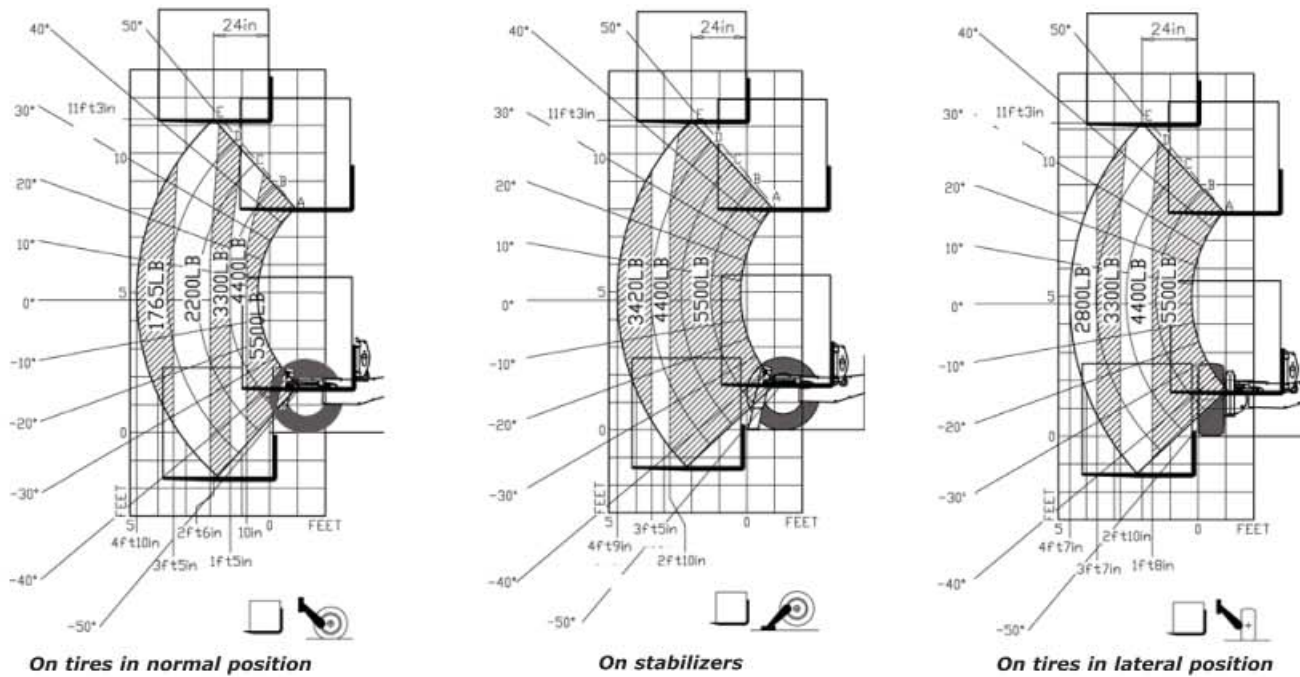
[www.stevensonsales.com](http://www.stevensonsales.com)

All measurements rounded to next higher dimension in feet/inches or pounds. MHt=Maximum Height; MCap=Maximum Capacity; VRch = Vertical Reach with Load; Cap@ = capacity at that dimension; HRch = Maximum forward reach; Outriggers are down (if equipped); Pwr: A = AC; B = battery; D = Diesel; P = Propane; G = gas; Drive: 2 = 2 wheel drive; 4 = 4 wheel drive; N = non-marking tires; R = Rough Terrain; C = crawler undercarriage; S = 4 wheel steering; P = push around; Width = width of machine; Plat. Ht = platform you stand on; Plat.Size is max dimension w/o extension; Cap = max capacity (w/o platform extension); E = platform extension

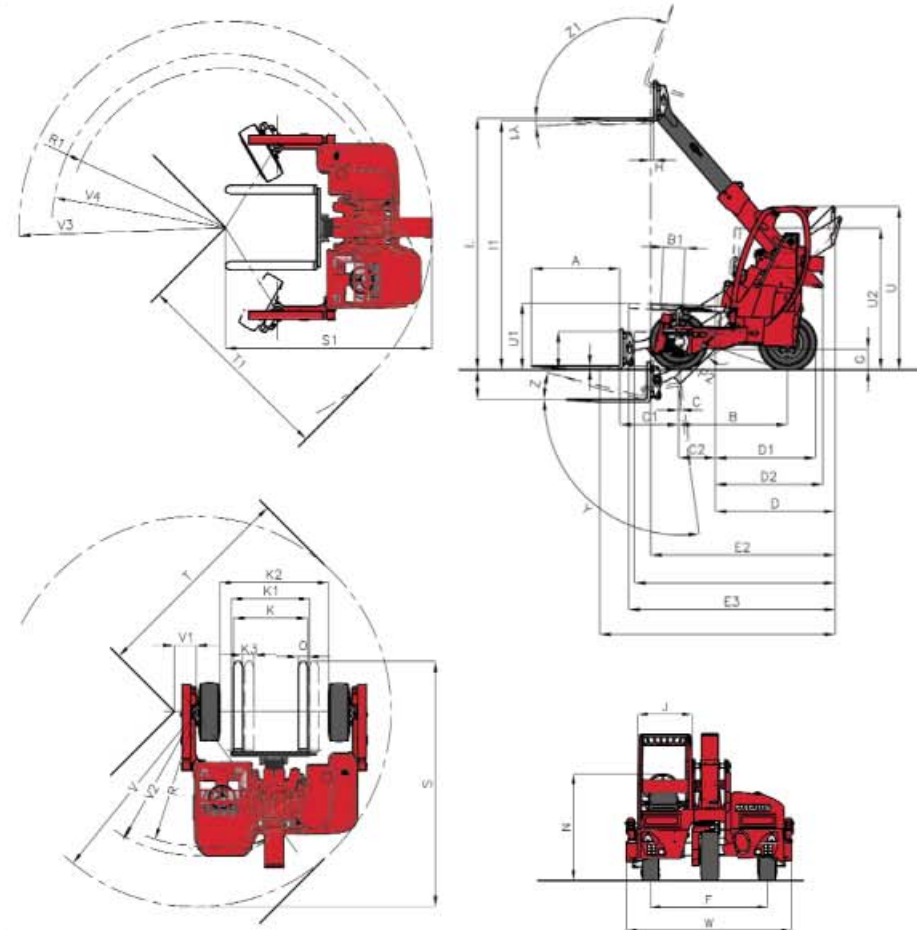
SS\_linecard\_2009.pdf

## LOAD CAPACITY CHARTS

EQUIPPED WITH STANDARD 48" CARRIAGE AND 48" FORKS  
(OPTIONAL ATTACHMENTS CAN DERATE THIS CHART)



Capacities shown in pounds/feet are the maximum recommended load limits at the indicated extensions of the boom. Capacity ratings are based on a 48" homogeneous cube and are in accordance with ANSI/ASME B56.6 stability standards. Capacity reductions must be made for extended load centers and when used with various other attachments, contact MANITOU NORTH AMERICA, INC.



### DIMENSIONS:

A.....48	M.....16
B.....58	M <sub>1</sub> .....20
B <sub>1</sub> .....12	N.....64
C.....1	O.....5
C <sub>1</sub> .....32	P <sub>2</sub> .....51°
C <sub>2</sub> .....20	R.....72
D.....64	R <sub>1</sub> .....85
D <sub>1</sub> .....53	S.....132
D <sub>2</sub> .....57	S <sub>1</sub> .....111
E.....130	T.....113
E <sub>1</sub> .....112	T <sub>1</sub> .....111
E <sub>2</sub> .....99	U.....87
E <sub>3</sub> .....110	U <sub>1</sub> .....36
F.....69	U <sub>2</sub> .....76
G.....11	V.....105
H.....2	V <sub>1</sub> .....12
I.....135	V <sub>2</sub> .....77
I <sub>1</sub> .....133	V <sub>3</sub> .....111
J.....32	V <sub>4</sub> .....87
K.....42	W.....98
K <sub>1</sub> .....42	Y.....98°
K <sub>2</sub> .....58	Y <sub>1</sub> .....3.7°
K <sub>3</sub> .....6	Z.....14°
L.....2	Z <sub>1</sub> .....108°

## TMT 55FL-4W/FLXT-4W

-  **Lift Capacity**  
Maximum (24 in. load center).....5,500 lb.
-  **Lift Height:**  
Maximum lift height.....135 in.  
Maximum forward reach .....58 in.
-  **Tires:**  
Front.....31x10-16.5  
Rear.....31x10-16.5  
.....(XT model) 31x15.5-15
-  **Forks:**  
Length.....48 in.  
Width x thickness.....4 in. x 1.75 in.  
Carriage tilt .....108°
-  **Brakes:**  
Service (pedal) .....Hydrostatic  
Parking brake .....Negative disc with electrical control
-  **Engine:**  
Type .....Perkins 404C-22 Diesel  
Displacement .....135 cu. in.  
Horsepower (@3000 rpm) .....52  
Maximum Torque (@1800 rpm).....105 ftlb.  
.....(XT model) 142 ftlb.  
Injection .....Indirect  
Cooling .....Water
-  **Transmission:**  
Type .....Hydrostatic  
Hydraulic reversing shift, full syncro  
Maximum travel speed.....8 mph
-  **Hydraulics:**  
Pump.....Gear type  
Flow .....9.4 gpm  
Flow divider with priority to steering
-  **Capacities:**  
Cooling system .....3 gal.  
Engine oil.....3 gal.  
Fuel tank .....9 gal.  
Hydraulic fluid .....8 gal.
-  **Specifications:**  
Weight (without forks) .....6,000 lb.  
.....(XT model) 6,355 lb.  
Turning radius (outside wheels) .....103 in.  
Overall height.....85 in.  
Overall width.....96 in.  
Overall length (without forks) .....115 in.  
Overhang.....55 in.  
Ground clearance.....10 in.

### STANDARD EQUIPMENT:

- 50" ITA Class II Standard Carriage
- Ergonomic ROPS/FOPS Operator's Compartment
- 4-Way steering
- Stabilizers
- Full Instrumentation
- Differential Lock
- Service Brake
- Joystick Controls
- DOT Light Package with Hook Up Harness
- LED Lights
- Backup Alarm
- Side Shift

### OPTIONAL EQUIPMENT:

- Load Backrest
- Rotating Beacon
- Turbo II Precleaner
- Spare Tire
- Supplemental Hydraulic Circuit
- Turf Tires
- Carriage Rollers
- Drywall Package

In addition to the 52 HP Perkins engine, the TMT 55FLXT 4W has optimum torque.



Enables you to unload your truck-trailer from one side only with excellent visibility, without additional attachment.

### FNR JOYSTICK



This new boom control joystick now integrates the reversing shift function: the driver can keep one hand on the steering wheel and one hand on this joystick to operate any movement. Time saving and much better driving position.