



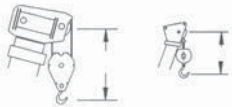
# STEVENSON

CRANE SERVICE INC

## Terex T-775 Truck Crane Load Charts

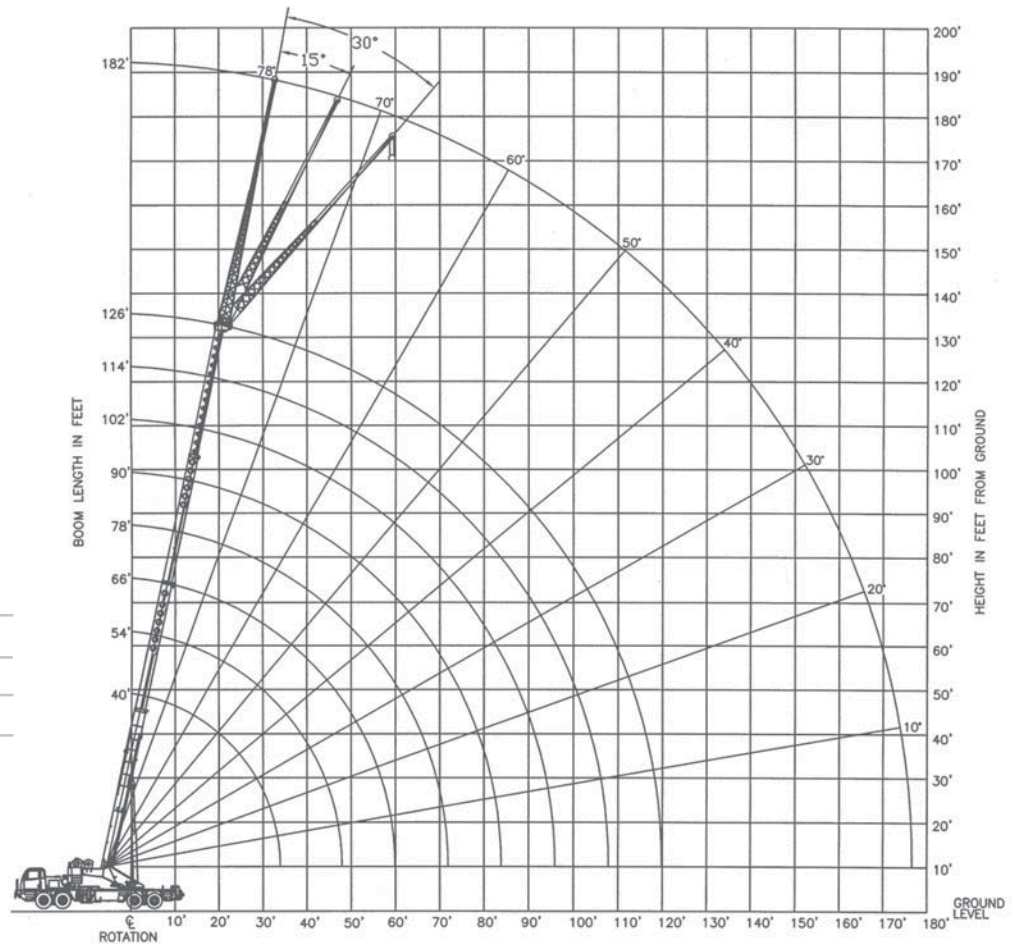
### 75 TON LIFTING CAPACITY

### RANGE DIAGRAM 40' - 126' BOOM

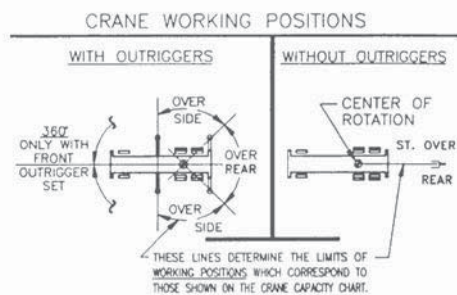


Dimensions are for largest factory furnished hook block and hook & ball, with anti-two block activated

COUNTER WEIGHT	F. BUMPER 1,000 LB
BOOM LENGTH	40'-126'
UPPERSTRUCTURE	W/AUX. WINCH 13,450 LB W/O AUX. WINCH 15,000 LB
STABILITY PERCENTAGE	ON OUTRIGGERS 85% ON TIRES 75%
PCSA CLASS	10-326



### CRANE WORKING CONDITIONS



### REDUCTION IN MAIN BOOM CAPACITY

All jib in stowed position	0 lb
Aux. boom in head sheave	100lb

### HOOK BLOCK WEIGHTS

12T Hook & ball	419 lb
75T hook block (6 sheave)	1608 lb

# Terex T-775 Truck Crane Load Charts

## LIFTING CAPACITIES

CAUTION: Do not use this specification sheet as a load rating chart. The format of data is not consistent with the machine chart and may be subject to change

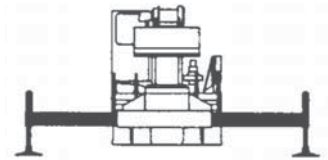
### ON OUTRIGGERS - FULLY EXTENDED AND WITH 15,000 LB COUNTERWEIGHT

LOAD RADIUS (FT)	BOOM LENGTH 40'			BOOM LENGTH 54'			BOOM LENGTH 66'			BOOM LENGTH 78'			LOAD RADIUS (FT)
	LOADED BOOM ANGLE (DEG)	OVER REAR (LB)	360° (LB)	LOADED BOOM ANGLE (DEG)	OVER REAR (LB)	360° (LB)	LOADED BOOM ANGLE (DEG)	OVER REAR (LB)	360° (LB)	LOADED BOOM ANGLE (DEG)	OVER REAR (LB)	360° (LB)	
10	69.4	150,000*	150,000*	74.9	102,600*	102,600*							10
12	66.2	125,700*	125,700*	72.7	102,600*	102,600*							12
15	61.2	109,000*	109,000*	69.3	100,600*	100,600*							15
20	52.3	84,600*	83,900*	63.4	85,400*	84,900*	73.2	80,700*	80,700*				20
25	41.9	65,600*	65,600*	57.1	66,600*	66,600*	68.5	72,000*	72,000*	72.0	62,300*	62,300*	25
30	28.4	52,300	52,300*	50.2	53,700	53,700*	63.7	64,900*	64,900*	68.1	55,800*	55,800*	30
35	**			43.1	41,000	41,000*	58.7	54,100	54,100*	64.0	49,800*	49,800*	35
40				33.5	32,600	32,600	53.3	41,600	41,600*	59.7	41,800	41,800*	40
45				20.9	26,500	26,500	47.5	33,200	33,200	55.3	33,500	33,500	45
50				**			41.0	27,200	27,200	50.6	27,500	27,500	50
55							33.5	22,600	22,600	45.5	23,000	23,000	55
60							23.9	19,100	19,100	39.9	19,500	19,500	60
65							**			33.5	16,700	16,700	65
70										25.7	14,300	14,300	70
75										14.0	12,400	12,400	75
										**			

### \*\*MAXIMUM CAPACITY AT 0 DEGREE BOOM ANGLE

BOOM LENGTH 40'			BOOM LENGTH 54'			BOOM LENGTH 66'			BOOM LENGTH 78'		
LOAD RADIUS (FT)	OVER REAR (LB)	360° (LB)	LOAD RADIUS (FT)	OVER REAR (LB)	360° (LB)	LOAD RADIUS (FT)	OVER REAR (LB)	360° (LB)	LOAD RADIUS (FT)	OVER REAR (LB)	360° (LB)
33.9	28,600*	28,600*	47.9	19,100*	19,100*	59.9	14,200*	14,200*	71.9	10,800*	10,800*

USE THESE CHARTS ONLY WHEN ALL OUTRIGGERS ARE FULLY EXTENDED



### ON OUTRIGGERS - FULLY EXTENDED AND WITH 15,000 LB COUNTERWEIGHT

LOAD RADIUS (FT)	BOOM LENGTH 90'			BOOM LENGTH 102'			BOOM LENGTH 114'			BOOM LENGTH 126'			LOAD RADIUS (FT)
	LOADED BOOM ANGLE (DEG)	OVER REAR (LB)	360° (LB)	LOADED BOOM ANGLE (DEG)	OVER REAR (LB)	360° (LB)	LOADED BOOM ANGLE (DEG)	OVER REAR (LB)	360° (LB)	LOADED BOOM ANGLE (DEG)	OVER REAR (LB)	360° (LB)	
20	74.5	56,300*	56,300*										20
25	71.2	48,100*	48,100*	73.5	42,000*	42,000*							25
30	67.7	41,800*	41,800*	70.5	36,500*	36,500*	72.6	31,600*	31,600*				30
35	64.2	36,700*	36,700*	67.4	32,200*	32,200*	70.0	29,600*	29,600*	71.9	24,800*	24,800*	35
40	60.5	33,000*	33,000*	64.3	28,700*	28,700*	67.2	26,300*	26,300*	69.5	24,700*	24,700*	40
45	56.7	27,700	27,700	61.1	25,800*	25,800*	64.4	23,600*	23,600*	67.0	22,200*	22,200*	45
50	52.8	23,200	23,200	57.8	23,400	23,400*	61.5	21,500*	21,500*	64.5	20,100*	20,100*	50
55	48.5	19,800	19,800	54.4	19,900	19,900	58.6	19,600*	19,600*	62.0	18,300*	18,300*	55
60	44.0	16,900	16,900	50.8	17,100	17,100	55.6	17,200	17,200	59.3	16,700*	16,700*	60
65	39.1	14,600	14,600	47.0	14,800	14,800	52.5	14,900	14,900	56.6	15,000	15,000	65
70	33.5	12,700	12,700	42.9	12,900	12,900	49.1	13,000	13,000	53.8	13,100	13,100	70
75	26.9	11,100	11,100	38.5	11,200	11,200	45.7	11,400	11,400	50.9	11,500	11,500	75
80	18.1	9,600	9,600	33.5	9,900	9,900	42.0	10,000	10,000	47.8	10,100	10,100	80
85	**			27.8	8,600	8,600	38.0	8,800	8,800	44.6	8,900	8,900	85
90				20.6	7,600	7,600	33.5	7,800	7,800	41.2	7,800	7,800	90
95				8.6	6,600	6,600	28.5	6,800	6,800	37.5	6,900	6,900	95
100				**			22.4	5,900	5,900	33.5	6,100	6,100	100
105							13.9	5,200	5,100	29.0	5,300	5,300	105
110							**			23.7	4,700	4,600	110
115										16.9	4,000	4,000	115

### \*\*MAXIMUM CAPACITY AT 0 DEGREE BOOM ANGLE

BOOM LENGTH 90'			BOOM LENGTH 102'			BOOM LENGTH 114'			BOOM LENGTH 126'		
LOAD RADIUS (FT)	OVER REAR (LB)	360° (LB)	LOAD RADIUS (FT)	OVER REAR (LB)	360° (LB)	LOAD RADIUS (FT)	OVER REAR (LB)	360° (LB)	LOAD RADIUS (FT)	OVER REAR (LB)	360° (LB)
83.9	8,300*	8,300*	95.9	6,400*	6,400*	107.9	4,800	4,700	119.9	3,500	3,400

# Terex T-775 Truck Crane Load Charts

## LIFTING CAPACITIES

CAUTION: Do not use this specification sheet as a load rating chart. The format of data is not consistent with the machine chart and may be subject to change

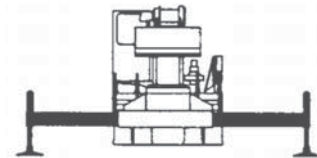
### ON OUTRIGGERS - FULLY EXTENDED AND WITH 11,000 LB COUNTERWEIGHT

LOAD RADIUS (FT)	BOOM LENGTH 40'			BOOM LENGTH 54'			BOOM LENGTH 66'			BOOM LENGTH 78'			LOAD RADIUS (FT)
	LOADED BOOM ANGLE (DEG)	OVER REAR (LB)	360° (LB)	LOADED BOOM ANGLE (DEG)	OVER REAR (LB)	360° (LB)	LOADED BOOM ANGLE (DEG)	OVER REAR (LB)	360° (LB)	LOADED BOOM ANGLE (DEG)	OVER REAR (LB)	360° (LB)	
10	69.4	150,000*	150,000*	74.9	102,600*	102,600*							10
12	66.2	125,700*	125,700*	72.7	102,600*	102,600*							12
15	61.2	109,000*	109,000*	69.3	100,600*	100,600*							15
20	52.3	82,100*	82,100*	63.4	83,200*	83,200*	73.2	80,700*	80,700*	72.0	62,300*	62,300*	20
25	41.9	63,500*	63,500*	57.1	64,600*	64,600*	63.7	64,900*	64,900*	68.1	55,800*	55,800*	25
30	28.4	49,100	49,100*	50.2	50,500	50,500*	58.7	50,900	50,900*	64.0	49,800*	49,800*	30
35	**			43.1	38,500	38,500	53.3	39,000	39,000	59.7	39,300	39,300	35
40				33.5	30,400	30,400	47.5	31,000	31,000	55.3	31,300	31,300	40
45				20.9	24,700	24,700	41.0	25,300	25,300	50.6	25,700	25,700	45
50				**			33.5	21,000	21,000	45.5	21,400	21,400	50
55							23.9	17,600	17,600	39.9	18,000	18,000	55
60							**			33.5	15,300	15,200	60
65										25.7	13,100	12,900	65
70										14.0	11,300	11,100	70
75										**			75

USE THESE CHARTS ONLY WHEN ALL OUTRIGGERS ARE FULLY EXTENDED

### \*\*MAXIMUM CAPACITY AT 0 DEGREE BOOM ANGLE

BOOM LENGTH 40'			BOOM LENGTH 54'			BOOM LENGTH 66'			BOOM LENGTH 78'		
LOAD RADIUS (FT)	OVER REAR (LB)	360° (LB)	LOAD RADIUS (FT)	OVER REAR (LB)	360° (LB)	LOAD RADIUS (FT)	OVER REAR (LB)	360° (LB)	LOAD RADIUS (FT)	OVER REAR (LB)	360° (LB)
33.9	28,600*	28,600*	47.9	19,100*	19,100*	59.9	14,200*	14,200*	71.9	10,600	10,400



### ON OUTRIGGERS - FULLY EXTENDED AND WITH 11,000 LB COUNTERWEIGHT

LOAD RADIUS (FT)	BOOM LENGTH 90'			BOOM LENGTH 102'			BOOM LENGTH 114'			BOOM LENGTH 126'			LOAD RADIUS (FT)
	LOADED BOOM ANGLE (DEG)	OVER REAR (LB)	360° (LB)	LOADED BOOM ANGLE (DEG)	OVER REAR (LB)	360° (LB)	LOADED BOOM ANGLE (DEG)	OVER REAR (LB)	360° (LB)	LOADED BOOM ANGLE (DEG)	OVER REAR (LB)	360° (LB)	
10													10
12													12
15													15
20	74.5	56,300*	58,300*										20
25	71.2	48,100*	48,100*	73.5	42,000*	42,000*							25
30	67.7	41,800*	41,800*	70.5	36,500*	36,500*	72.6	31,600*	31,600*				30
35	64.2	36,700*	36,700*	67.4	32,200*	32,200*	70.0	29,600*	29,600*	71.9	24,800*	24,800*	35
40	60.5	31,500	31,500	64.3	28,700*	28,700*	67.2	26,300*	26,300*	69.5	24,700*	24,700*	40
45	56.7	25,800	25,800	61.1	25,800*	25,800*	64.4	23,600*	23,600*	67.0	22,200*	22,200*	45
50	52.8	21,600	21,600	57.8	21,700	21,700	61.5	21,500*	21,500*	64.5	20,100*	20,100*	50
55	48.5	18,300	18,200	54.4	18,400	18,300	58.6	18,500	18,400	62.0	18,300*	18,300*	55
60	44.0	15,600	15,500	50.8	15,800	15,600	55.6	15,900	15,700	59.3	15,900	15,800	60
65	39.1	13,400	13,200	47.0	13,600	13,400	52.5	13,700	13,500	56.6	13,800	13,500	65
70	33.5	11,600	11,400	42.9	11,800	11,500	49.1	11,900	11,600	53.8	12,000	11,700	70
75	26.9	10,000	9,800	38.5	10,200	10,000	45.7	10,300	10,100	50.9	10,400	10,200	75
80	18.1	8,700	8,400	33.5	8,900	8,600	42.0	9,000	8,800	47.8	9,100	8,900	80
85	**			27.8	7,700	7,500	38.0	7,900	7,600	44.6	8,000	7,700	85
90				20.6	6,700	6,500	33.5	6,800	6,600	41.2	7,000	6,700	90
95				8.6	5,800	5,600	28.5	6,000	5,700	37.5	6,100	5,900	95
100				**			22.4	5,200	5,000	33.5	5,300	5,100	100
105							13.9	4,400	4,200	29.0	4,600	4,400	105
110							**			23.7	3,900	3,700	110
115										16.9	3,300	3,200	115

### \*\*MAXIMUM CAPACITY AT 0 DEGREE BOOM ANGLE

BOOM LENGTH 90'			BOOM LENGTH 102'			BOOM LENGTH 114'			BOOM LENGTH 126'		
LOAD RADIUS (FT)	OVER REAR (LB)	360° (LB)	LOAD RADIUS (FT)	OVER REAR (LB)	360° (LB)	LOAD RADIUS (FT)	OVER REAR (LB)	360° (LB)	LOAD RADIUS (FT)	OVER REAR (LB)	360° (LB)
83.9	7,700	7,500	95.9	5,600	5,400	107.9	4,000	3,800	119.9	2,800	2,600

# Terex T-775 Truck Crane Load Charts

## LIFTING CAPACITIES

CAUTION: Do not use this specification sheet as a load rating chart. The format of data is not consistent with the machine chart and may be subject to change

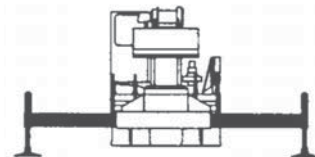
### ON OUTRIGGERS - FULLY EXTENDED AND WITH 7,000 LB COUNTERWEIGHT

LOAD RADIUS (FT)	BOOM LENGTH 40'			BOOM LENGTH 54'			BOOM LENGTH 66'			BOOM LENGTH 78'			LOAD RADIUS (FT)
	LOADED BOOM ANGLE (DEG)	OVER REAR (LB)	360° (LB)	LOADED BOOM ANGLE (DEG)	OVER REAR (LB)	360° (LB)	LOADED BOOM ANGLE (DEG)	OVER REAR (LB)	360° (LB)	LOADED BOOM ANGLE (DEG)	OVER REAR (LB)	360° (LB)	
10	69.4	150,000*	149,400*	74.9	102,600*	102,600*							10
12	66.2	125,700*	125,700*	72.7	102,600*	102,600*							12
15	61.2	109,000*	106,400*	69.3	100,600*	100,600*	73.2	80,700*	80,700*				15
20	52.3	79,700*	79,700*	63.4	80,700*	80,700*	68.5	72,000*	72,000*	72.0	62,300*	62,300*	20
25	41.9	61,600*	61,600*	57.1	62,600*	62,600*	63.7	63,200*	63,200*	68.1	55,800*	55,800*	25
30	28.4	44,700	44,700*	50.2	46,100	46,100*	58.7	46,500	46,500*	64.0	46,800	46,800*	30
35	**			43.1	35,000	35,000	53.3	35,500	35,500	59.7	35,700	35,700	35
40				33.5	27,500	27,500	47.5	28,100	28,100	55.3	28,400	28,400	40
45				20.9	22,100	22,100	41.0	22,800	22,800	50.6	23,100	23,100	45
50				**			33.5	18,800	18,800	45.5	19,200	19,200	50
55							23.9	15,600	15,600	39.9	16,000	16,000	55
60							**			33.5	13,500	13,300	60
65										25.7	11,500	11,200	65
70										14.0	9,800	9,400	70
75										**			75

### \*\*MAXIMUM CAPACITY AT 0 DEGREE BOOM ANGLE

BOOM LENGTH 40'			BOOM LENGTH 54'			BOOM LENGTH 66'			BOOM LENGTH 78'		
LOAD RADIUS (FT)	OVER REAR (LB)	360° (LB)	LOAD RADIUS (FT)	OVER REAR (LB)	360° (LB)	LOAD RADIUS (FT)	OVER REAR (LB)	360° (LB)	LOAD RADIUS (FT)	OVER REAR (LB)	360° (LB)
33.9	28,600*	28,600*	47.9	19,100*	19,100*	59.9	13,100	12,900	71.9	9,200	8,800

USE THESE CHARTS ONLY WHEN ALL OUTRIGGERS ARE FULLY EXTENDED



### ON OUTRIGGERS - FULLY EXTENDED AND WITH 7,000 LB COUNTERWEIGHT

LOAD RADIUS (FT)	BOOM LENGTH 90'			BOOM LENGTH 102'			BOOM LENGTH 114'			BOOM LENGTH 126'			LOAD RADIUS (FT)
	LOADED BOOM ANGLE (DEG)	OVER REAR (LB)	360° (LB)	LOADED BOOM ANGLE (DEG)	OVER REAR (LB)	360° (LB)	LOADED BOOM ANGLE (DEG)	OVER REAR (LB)	360° (LB)	LOADED BOOM ANGLE (DEG)	OVER REAR (LB)	360° (LB)	
10													10
12													12
15													15
20	74.5	56,300*	56,300*										20
25	71.2	48,100*	48,100*	73.5	42,000*	42,000*							25
30	67.7	41,800*	41,800*	70.5	36,500*	36,500*	72.6	31,600*	31,600*				30
35	64.2	35,900	35,900*	67.4	32,200*	32,200*	70.0	29,600*	29,600*	71.9	24,800*	24,800*	35
40	60.5	28,600	28,600	64.3	28,700*	28,700*	67.2	26,300*	26,300*	69.5	24,700*	24,700*	40
45	56.7	23,300	23,300	61.1	23,400	23,400	64.4	23,500	23,500*	67.0	22,200*	22,200*	45
50	52.8	19,400	19,400	57.8	19,500	19,500	61.5	19,600	19,600	64.5	19,700	19,700	50
55	48.5	16,300	16,200	54.4	16,400	16,300	58.6	16,500	16,400	62.0	16,600	16,500	55
60	44.0	13,800	13,600	50.8	14,000	13,700	55.6	14,100	13,800	59.3	14,200	13,900	60
65	39.1	11,800	11,500	47.0	12,000	11,600	52.5	12,100	11,700	56.6	12,200	11,800	65
70	33.5	10,100	9,700	42.9	10,300	9,900	49.1	10,400	10,000	53.8	10,500	10,100	70
75	26.9	8,600	8,200	38.5	8,800	8,400	45.7	9,000	8,500	50.9	9,100	8,600	75
80	18.1	7,400	7,000	33.5	7,600	7,200	42.0	7,700	7,300	47.8	7,900	7,400	80
85	**			27.8	6,500	6,100	38.0	6,700	6,200	44.6	6,800	6,300	85
90				20.6	5,600	5,100	33.5	5,700	5,300	41.2	5,800	5,400	90
95				8.6	4,700	4,300	28.5	4,900	4,500	37.5	5,000	4,600	95
100				**			22.4	4,100	3,700	33.5	4,300	3,800	100
105							13.9	3,500	3,000	29.0	3,600	3,200	105
110							**			23.7	3,000	2,600	110
115										16.9	2,500	2,100	115

### \*\*MAXIMUM CAPACITY AT 0 DEGREE BOOM ANGLE

BOOM LENGTH 90'			BOOM LENGTH 102'			BOOM LENGTH 114'			BOOM LENGTH 126'		
LOAD RADIUS (FT)	OVER REAR (LB)	360° (LB)	LOAD RADIUS (FT)	OVER REAR (LB)	360° (LB)	LOAD RADIUS (FT)	OVER REAR (LB)	360° (LB)	LOAD RADIUS (FT)	OVER REAR (LB)	360° (LB)
83.9	7,700	7,500	95.9	5,600	5,400	107.9	4,000	3,800	119.9	2,800	2,600

# Terex T-775 Truck Crane Load Charts

## LIFTING CAPACITIES

CAUTION: Do not use this specification sheet as a load rating chart. The format of data is not consistent with the machine chart and may be subject to change

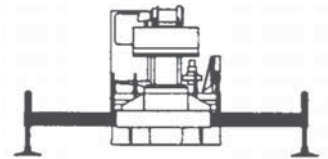
### ON OUTRIGGERS - FULLY EXTENDED AND WITH 5,000 LB COUNTERWEIGHT

LOAD RADIUS (FT)	BOOM LENGTH 40'			BOOM LENGTH 54'			BOOM LENGTH 66'			BOOM LENGTH 78'			LOAD RADIUS (FT)
	LOADED BOOM ANGLE (DEG)	OVER REAR (LB)	360° (LB)	LOADED BOOM ANGLE (DEG)	OVER REAR (LB)	360° (LB)	LOADED BOOM ANGLE (DEG)	OVER REAR (LB)	360° (LB)	LOADED BOOM ANGLE (DEG)	OVER REAR (LB)	360° (LB)	
10	69.4	150,000*	148,300*	74.9	102,600*	102,600*							10
12	66.2	125,700*	125,700*	72.7	102,600*	102,600*							12
15	61.2	108,100*	105,400*	69.3	100,600*	100,600*	73.2	80,700*	80,700*				15
20	52.3	78,500*	78,500*	63.4	79,600*	79,600*	68.5	72,000*	72,000*	72.0	62,300*	62,300*	20
25	41.9	60,600*	60,600*	57.1	61,700*	61,700*	63.7	62,200*	62,200*	68.1	55,800*	55,800*	25
30	28.4	42,800	42,800	50.2	44,200	44,200	58.7	44,600	44,600	64.0	44,900	44,100	30
35	**			43.1	33,400	33,400	53.3	34,000	34,000	59.7	34,200	34,200	35
40				33.5	26,200	26,200	47.5	26,800	26,800	55.3	27,100	27,100	40
45				20.9	22,100	21,100	41.0	21,700	21,700	50.6	22,100	22,100	45
50				**			33.5	17,800	17,600	45.5	18,200	17,900	50
55							23.9	14,800	14,400	39.9	15,200	14,800	55
60							**			33.5	12,800	12,300	60
65										25.7	10,800	10,300	65
70										14.0	9,100	8,600	70
75										**			75

### \*\*MAXIMUM CAPACITY AT 0 DEGREE BOOM ANGLE

BOOM LENGTH 40'			BOOM LENGTH 54'			BOOM LENGTH 66'			BOOM LENGTH 78'		
LOAD RADIUS (FT)	OVER REAR (LB)	360° (LB)	LOAD RADIUS (FT)	OVER REAR (LB)	360° (LB)	LOAD RADIUS (FT)	OVER REAR (LB)	360° (LB)	LOAD RADIUS (FT)	OVER REAR (LB)	360° (LB)
33.9	28,600*	28,600*	47.9	19,100*	19,100*	59.9	13,100	12,900	71.9	9,200	8,800

USE THESE CHARTS ONLY WHEN ALL OUTRIGGERS ARE FULLY EXTENDED



### ON OUTRIGGERS - FULLY EXTENDED AND WITH 5,000 LB COUNTERWEIGHT

LOAD RADIUS (FT)	BOOM LENGTH 90'			BOOM LENGTH 102'			BOOM LENGTH 114'			BOOM LENGTH 126'			LOAD RADIUS (FT)
	LOADED BOOM ANGLE (DEG)	OVER REAR (LB)	360° (LB)	LOADED BOOM ANGLE (DEG)	OVER REAR (LB)	360° (LB)	LOADED BOOM ANGLE (DEG)	OVER REAR (LB)	360° (LB)	LOADED BOOM ANGLE (DEG)	OVER REAR (LB)	360° (LB)	
10													10
12													12
15													15
20	74.5	56,300*	56,300*										20
25	71.2	48,100*	48,100*	73.5	42,000	42,000*							25
30	67.7	41,800*	41,800*	70.5	36,000*	36,500*	72.6	31,600*	31,600*				30
35	64.2	34,400	34,200	67.4	32,200*	32,200*	70.0	29,600*	29,600*	71.9	24,800*	24,800*	35
40	60.5	27,300	27,300	64.3	28,700*	28,700*	67.2	26,300*	26,300*	69.5	24,700*	24,700*	40
45	56.7	22,200	22,200	61.1	23,400	23,400	64.4	22,500	22,500	67.0	22,200*	22,200*	45
50	52.8	18,400	18,100	57.8	19,500	19,500	61.5	18,600	18,400	64.5	18,700	18,400	50
55	48.5	15,500	15,000	54.4	16,400	16,300	58.6	15,700	15,200	62.0	15,800	15,300	55
60	44.0	13,100	12,500	50.8	14,000	13,700	55.6	13,300	12,800	59.3	13,400	12,900	60
65	39.1	11,100	10,600	47.0	12,000	11,600	52.5	11,400	10,800	56.6	11,500	10,900	65
70	33.5	9,400	8,900	42.9	10,300	9,900	49.1	9,800	9,100	53.8	9,900	9,200	70
75	26.9	8,000	7,500	38.5	8,800	8,400	45.7	8,400	7,800	50.9	8,500	7,900	75
80	18.1	6,800	6,200	33.5	7,600	7,200	42.0	7,200	6,600	47.8	7,300	7,900	80
85	**			27.8	6,500	6,100	38.0	6,200	5,600	44.6	6,300	5,700	85
90				20.6	5,600	5,100	33.5	5,300	4,700	41.2	5,400	4,800	90
95				8.6	4,700	4,300	28.5	4,400	3,900	37.5	4,600	4,000	95
100				**			22.4	3,700	3,200	33.5	3,900	3,300	100
105							13.9	3,100	2,500	29.0	3,200	2,700	105
110							**			23.7	2,600	2,100	110
115										16.9	2,100	1,600	115

### \*\*MAXIMUM CAPACITY AT 0 DEGREE BOOM ANGLE

BOOM LENGTH 90'			BOOM LENGTH 102'			BOOM LENGTH 114'			BOOM LENGTH 126'		
LOAD RADIUS (FT)	OVER REAR (LB)	360° (LB)	LOAD RADIUS (FT)	OVER REAR (LB)	360° (LB)	LOAD RADIUS (FT)	OVER REAR (LB)	360° (LB)	LOAD RADIUS (FT)	OVER REAR (LB)	360° (LB)
83.9	6,500	6,100	95.9	4,600	4,100	107.9	3,100	2,700	119.9	2,000	1,600

# Terex T-775 Truck Crane Load Charts

## LIFTING CAPACITIES

CAUTION: Do not use this specification sheet as a load rating chart. The format of data is not consistent with the machine chart and may be subject to change

### SIDE STOW JIB ON FULLY EXTENDED OUTRIGGERS WITH 15,000 COUNTERWEIGHT

LOADED BOOM ANGLE (DEG)	33' OFFSETTABLE JIB									57' OFFSETTABLE JIB									LOADED BOOM ANGLE (DEG)
	0° OFFSET			15° OFFSET			30° OFFSET			0° OFFSET			15° OFFSET			30° OFFSET			
	LOAD RADIUS (REF) (FT)	REAR ONLY (LB)	360° (LB)	LOAD RADIUS (REF) (FT)	REAR ONLY (LB)	360° (LB)	LOAD RADIUS (REF) (FT)	REAR ONLY (LB)	360° (LB)	LOAD RADIUS (REF) (FT)	REAR ONLY (LB)	360° (LB)	LOAD RADIUS (REF) (FT)	REAR ONLY (LB)	360° (LB)	LOAD RADIUS (REF) (FT)	REAR ONLY (LB)	360° (LB)	
77	40	12,600*	12,600*	51	8,600*	8,600*	56	6,500*	6,500*	49	6,600*	6,600*	65	4,600*	4,600*	76	3,400*	3,400*	77
75	47	12,100*	12,100*	56	8,200*	8,200*	61	6,300*	6,300*	56	6,500*	6,500*	71	4,400*	4,400*	81	3,300*	3,300*	75
73	53	11,600*	11,600*	62	7,900*	7,900*	67	6,200*	6,200*	63	6,300*	6,300*	77	4,200*	4,200*	87	3,200*	3,200*	73
71	59	11,000*	11,000*	67	7,600*	7,600*	72	6,000*	6,000*	70	6,100*	6,100*	83	4,000*	4,000*	92	3,100*	3,100*	71
68	68	10,000*	10,000*	75	7,200*	7,200*	79	6,000*	6,000*	80	5,500*	5,500*	92	3,800*	3,800*	100	3,000*	3,000*	68
65	76	9,300*	9,300*	82	6,800*	6,800*	86	5,700*	5,700*	89	5,000*	5,000*	100	3,600*	3,600*	107	2,900*	2,900*	65
62	83	9,000*	9,000*	89	6,500*	6,500*	93	5,500*	5,500*	98	4,600*	4,600*	108	3,400*	3,400*	114	2,800*	2,800*	62
59	90	8,000*	8,000*	96	6,300*	6,300*	99	5,400*	5,400*	106	4,300*	4,300*	115	3,200*	3,200*	121	2,700*	2,700*	59
55	99	6,900	6,900	104	6,000*	6,000*	107	5,300*	5,300*	116	3,900*	3,900*	124	3,000*	3,000*	129	2,600*	2,600*	55
51	106	6,000	5,800	111	5,500	5,400	114	5,200*	5,200*	126	3,600*	3,600*	132	2,900*	2,900*	136	2,600*	2,600*	51
47	113	5,100	4,800	118	4,800	4,600	121	4,700	4,600	134	3,400*	3,400*	140	2,800*	2,800*	143	2,500*	2,500*	47
43	120	4,300	4,000	125	4,100	3,900	126	4,000	3,800	142	3,200*	3,200*	147	2,700*	2,700*	149	2,500*	2,500*	43
38	127	3,500	3,200	132	3,400	3,200	132	3,400	3,100	150	2,800	2,600	154	2,600*	2,400	156	2,500*	2,400	38
32	135	2,800	2,500	139	2,700	2,500	138	2,700	2,500	159	2,200	2,000	162	2,200	1,900	162	2,200	1,900	32
25	143	2,200	1,900	145	2,100	1,800				167	1,700	1,500	169	1,700	1,500				25
17	150	1,700	1,400	150	1,600	1,400				173	1,400	1,100	174	1,300	1,100				17
0	152	1,400	1,200							177	1,100	900							0

#### Notes For Jib Capacities:

- A. For all boom lengths less than the maximum with a jib erected, the rated loads are determined by boom angle only in the appropriate column.
- B. For boom angle not shown, use the capacity of the next lower boom angle.
- C. Listed radii are for extended main boom only.

### ON TIRES WITH 15,000 LB COUNTERWEIGHT

RADIUS (FT)	MAX BOOM LENGTH (FT)	ALL		
		STATIONARY	PICK & CARRY	
			STRAIGHT OVER REAR	CREEP
10	40	53,800*	38,800*	31,300*
12	40	49,400*	35,400*	28,500*
15	40	43,900*	31,200*	24,800*
20	40	33,100	25,600*	20,000*
25	54	23,500	21,200*	16,400*
30	54	17,800	17,800	13,400*
35	54	13,800	13,800	11,000*
40	66	11,200	11,200	9,400*
45	66	9,000	9,000	8,000*
50	66	7,300	7,300	6,800*
55	78	5,900	5,900	5,800*
60	78	4,700	4,700	4,700
65	78	3,800	3,800	3,800
70	90	3,100	3,100	3,100
75	90	2,500	2,500	2,500
80	90	1,900	1,900	1,900

#### Notes For On Tire Capacities:

- A. For Pick and Carry operations, boom must be centered over the front of the crane with swing brake and lock engaged. Use minimum boom point height and keep load close to ground surface. Travel must be on smooth level surface.
- B. The load should be restrained from swinging. NO ON TIRE OPERATION WITH JIB ERECTED.
- C. Without outriggers, never maneuver the boom beyond listed load radii for applicable tires to ensure stability.
- D. Creep speed is crane movement of less than 200' (61 m) in a 30 minute period and not exceeding 1.0 mph (1.6 km/h).
- E. Refer to General Notes for additional information.

### MAXIMUM PERMISSIBLE HOIST LINE LOAD

LINE PARTS	1	2	3	4	5	6	7	8	9	10	11
MAIN & AUX. HOIST	13,800	27,600	41,400	55,200	69,000	82,800	96,600	110,400	124,200	138,000	150,000
WIRE ROPE	3/4" ROTATION RESISTANT COMPACTED STRAND, 34X7, GRADE 2160, MINIMUM BREAKING STRENGTH-34.5 TONS. WEIGHT 1.24 LB/FT 3/4" 6X19 OR 6X37 IPS IWRC. PREFORMED RIGHT REGULAR LAY MINIMUM BREAKING STRENGTH 25.6 TONS. WEIGHT 1.04 LB/FT										

# Terex T-775 Truck Crane Load Charts

## LIFTING CAPACITIES

CAUTION: Do not use this specification sheet as a load rating chart. The format of data is not consistent with the machine chart and may be subject to change

### SIDE STOW JIB ON FULLY EXTENDED OUTRIGGERS WITH 7,000 COUNTERWEIGHT

LOADED BOOM ANGLE (DEG)	33' OFFSETTABLE JIB									57' OFFSETTABLE JIB									LOADED BOOM ANGLE (DEG)
	0° OFFSET			15° OFFSET			30° OFFSET			0° OFFSET			15° OFFSET			30° OFFSET			
	LOAD RADIUS (REF) (FT)	REAR ONLY (LB)	360° (LB)	LOAD RADIUS (REF) (FT)	REAR ONLY (LB)	360° (LB)	LOAD RADIUS (REF) (FT)	REAR ONLY (LB)	360° (LB)	LOAD RADIUS (REF) (FT)	REAR ONLY (LB)	360° (LB)	LOAD RADIUS (REF) (FT)	REAR ONLY (LB)	360° (LB)	LOAD RADIUS (REF) (FT)	REAR ONLY (LB)	360° (LB)	
77	39	12,600*	12,600*	49	8,600*	8,600*	57	6,500*	6,500*	49	6,600*	6,600*	66	4,600*	4,600*	75	3,400*	3,400*	77
75	46	12,100*	12,100*	55	8,200*	8,200*	62	6,300*	6,300*	57	6,500*	6,500*	72	4,400*	4,400*	81	3,300*	3,300*	75
73	53	11,600*	11,600*	60	7,900*	7,900*	67	6,200*	6,200*	64	6,300*	6,300*	78	4,200*	4,200*	86	3,200*	3,200*	73
71	59	11,000*	11,000*	66	7,600*	7,600*	72	6,000*	6,000*	71	6,100*	6,100*	84	4,000*	4,000*	92	3,100*	3,100*	71
68	67	10,000*	10,000*	73	7,200*	7,200*	79	6,000*	6,000*	81	5,500*	5,500*	92	3,800*	3,800*	99	3,000*	3,000*	68
65	75	9,300*	9,300*	81	6,800*	6,800*	86	5,700*	5,700*	90	5,000*	5,000*	100	3,600*	3,600*	107	2,900*	2,900*	65
62	82	8,300	8,100	87	6,500*	6,500*	93	5,500*	5,500*	98	4,600*	4,600*	108	3,400*	3,400*	114	2,800*	2,800*	62
59	88	7,000	6,900	94	6,200*	6,100	99	5,400*	5,400*	106	4,300*	4,300*	115	3,200*	3,200*	120	2,700*	2,700*	59
55	97	5,600	5,500	102	5,200	5,000	106	4,900	4,600	116	3,900*	3,900*	124	3,000*	3,000*	128	2,600*	2,600*	55
51	104	4,500	4,300	110	4,300	4,000	113	4,100	3,700	124	3,600*	3,300	132	2,900*	2,900*	136	2,600*	2,600*	51
47	111	3,600	3,400	117	3,500	3,200	120	3,400	3,000	132	2,900	2,500	140	2,700*	2,300	143	2,500*	2,300	47
43	117	2,900	2,700	123	2,800	2,500	126	2,800	2,300	139	2,300	1,900	146	2,200	1,800	149	2,100	1,800	43
38	125	2,200	1,900	130	2,100	1,700	132	2,100	1,700	147	1,700	1,300	154	1,600	1,300	155	1,600	1,300	38
32	135	1,600	1,300	137	1,500	1,100	138	1,500	1,200	156	1,200		168	1,100		162	1,100		32
25	141	1,000		143	900														25

#### Notes For Jib Capacities:

- A. For all boom lengths less than the maximum with a jib erected, the rated loads are determined by boom angle only in the appropriate column.
- B. For boom angle not shown, use the capacity of the next lower boom angle.
- C. Listed radii are for extended main boom only.

### ON TIRES WITH 7,000 LB COUNTERWEIGHT

RADIUS (FT)	MAX BOOM LENGTH (FT)	ALL		
		STATIONARY	PICK & CARRY	
			STRAIGHT OVER REAR	CREEP
10	40	55,300*	40,400*	32,900*
12	40	50,900*	36,900*	29,900*
15	40	44,600	32,500*	26,200*
20	40	28,000	26,700*	21,200*
25	54	19,500	19,500	17,400*
30	54	14,600	14,600	14,300*
35	54	11,100	11,100	11,100
40	66	8,000	8,000	8,000
45	66	6,000	6,000	6,000
50	66	4,700	4,700	4,700
55	78	3,900	3,900	3,900
60	78	3,300	3,300	3,300
65	78	2,700	2,700	2,700
70	90	1,900	1,900	1,900

#### Notes For Tire Capacities:

- A. For Pick and Carry operations, boom must be centered over the front of the crane with swing brake and lock engaged. Use minimum boom point height and keep load close to ground surface. Travel must be on smooth level surface.
- B. The load should be restrained from swinging. NO ON TIRE OPERATION WITH JIB ERECTED.
- C. Without outriggers, never maneuver the boom beyond listed load radii for applicable tires to ensure stability.
- D. Creep speed is crane movement of less than 200' (61 m) in a 30 minute period and not exceeding 1.0 mph (1.6 km/h).
- E. Refer to General Notes for additional information.

### MAXIMUM PERMISSIBLE HOIST LINE LOAD

LINE PARTS	1	2	3	4	5	6	7	8	9	10	11
MAIN & AUX. HOIST	13,800	27,600	41,400	55,200	69,000	82,800	96,600	110,400	124,200	138,000	150,000
WIRE ROPE	3/4" ROTATION RESISTANT COMPACTED STRAND, 34X7, GRADE 2160, MINIMUM BREAKING STRENGTH-34.5 TONS. WEIGHT 1.24 LB/FT 3/4" 6X19 OR 6X37 IPS IWRC. PREFORMED RIGHT REGULAR LAY MINIMUM BREAKING STRENGTH 25.6 TONS. WEIGHT 1.04 LB/FT										