

MANISCOPIC

MT 1745
H S L Turbo

- **Lift Capacity: 10,000 lb.**
- **Maximum Lift Height: 54 ft. 5 in.**
- **Maximum Forward Reach: 39 ft. 9 in.**
- **Perkins 101 HP Engine**
- **Hydrostatic Transmission**
- **Four Wheel Drive**
- **Three Steering Modes**
- **Hydraulic Stabilizers**
- **Frame Leveling**



Shown with optional enclosed cab
and windshield protection guard



410 Stevenson Dr • Bolingbrook, IL 60440 • 630-972-9199
16675 Van Dam Rd • South Holland, IL 60473 • 219-972-9199

www.stevensoncrane.com

MT 1745HSLTurbo



Lift Capacity:

Maximum (24 in. load center).....10,000 lb.
Break out force on bucket teeth
with tilting ram (ISO 8313)18,500 lbf.



Lift Height:

Maximum lift height.....54 ft. 5 in.
Maximum forward reach.....39 ft. 9 in
Times: unladen / loaded (in sec)



Lifting15/16
Lowering.....10/9

Tires:

.....14.00 x 24 14 PR L2



Forks:

Length48 in.
Thickness/width2.25 in. x 4 in.
Carriage rotation124°



Brakes:

.....Hydraulic with oil immersed discs on front axle



Engine:

TypePerkins 1104C-44T Turbo Diesel
Displacement4 cyl. 268 cu. in.
Power101 HP/74.5 kw
Maximum Torque (@1400 rpm)304 ft.lb.
InjectionDirect
CoolingWater



Transmission:

TypeHydrostatic
Electro-hydraulic reversing shift
Speeds forward/reverse.....4/2
Maximum travel speed17 mph



Hydraulics:

Pump.....Dual Gear type
Flow3770 PSI - 54 gpm
Flow divider with priority to steering



Capacities:

Cooling system.....5.5 gal.
Engine oil3 gal.
Fuel tank36 gal.
Hydraulic fluid46.5 gal.



Specifications:

Weight (base unit)24,438 lb.
Turning radius (outside wheels)174 in.
Overall height105 in.
Overall width97 in.
Overall length (without forks)234 in.
Ground clearance21 in.
Maximum drawbar pull.....17,000 lbf.

STANDARD EQUIPMENT:

- Full Time Power Steering
- 3 Modes of Steering with Wheel Alignment Indicator
- Adjustable Cushioned Ride Seat with Seat Belt
- Warning Lights for High Oil Temperatures
- Air Cleaner Service Indicator
- Hydraulic Oil Filter Restriction Gauge
- Road Lights
- Horn
- Alternator
- Backup Alarm
- Wet Disc Brakes
- Neutral Start Switch
- Instrument Cluster with Engine Oil Pressure, Water Temperature, Ammeter, Fuel Level Gauge
- Auxiliary Hydraulic Circuit
- Tow Pin
- Engine Hour Meter

OPTIONAL EQUIPMENT:

- A wide variety of attachments and options are available to meet the customer's individual applications

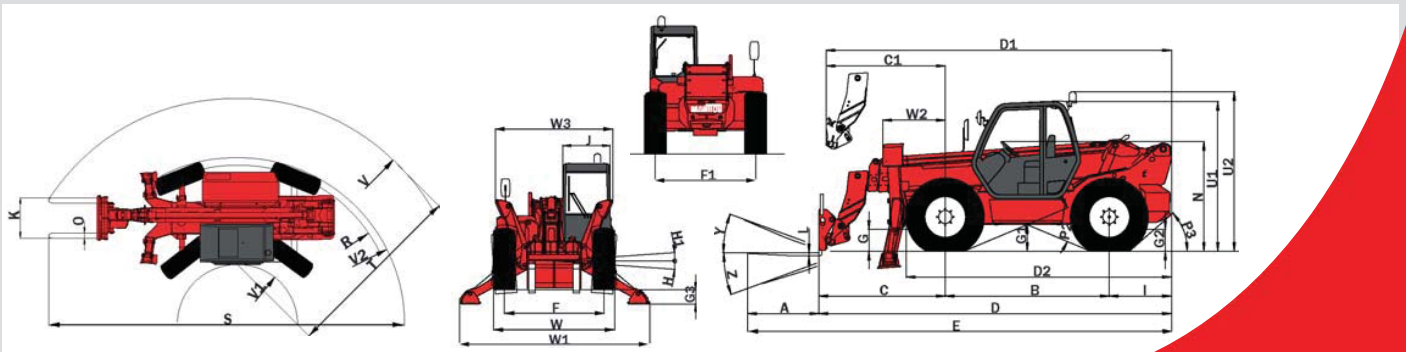
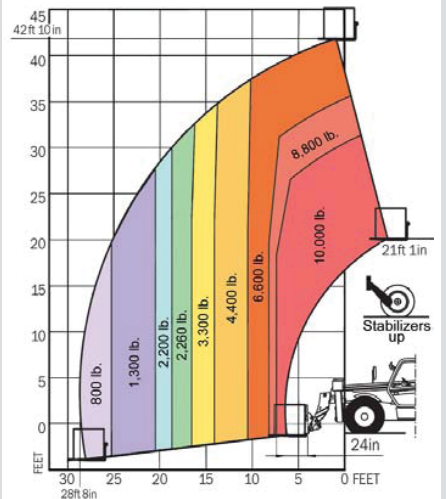
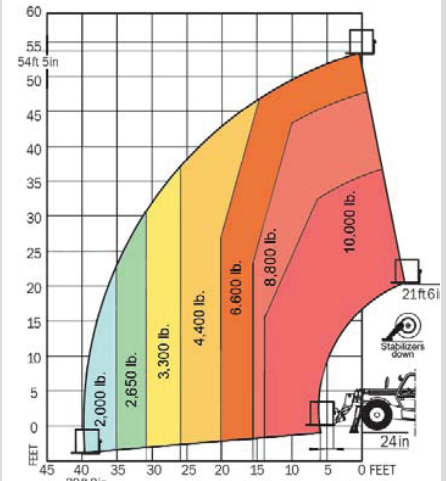
DIMENSIONS:

A48	K48
B121	L2.25
C72	N77
C ₁76	O4
D234	P ₂44°
D ₁238	P ₃52°
D ₂189	R166
E282	S354
F82	T158
F ₁82	U ₁105
G21.5	V225
G ₁21	V ₁67
G ₂21.5	V ₂174
G ₃11	W97
H7°	W ₁150
H ₁7°	W ₂41
I41	W ₃93
J37	Y12°
	Z112°

LOAD CAPACITY CHART

CALCULATED WITH 48" CARRIAGE AND FORKS (OPTIONAL ATTACHMENTS CAN DERATE THIS CHART)

Capacities shown in pounds/feet are the maximum recommended load limits at the indicated extensions of the boom. Capacity ratings are based on a 48" homogeneous cube and are in accordance with ANSI/ASME B56.6 stability standards. Capacity reductions must be made for extended load centers and when used with various other attachments, contact MANITOU NORTH AMERICA, INC.



410 Stevenson Dr • Bolingbrook, IL 60440 • 630-972-9199
16675 Van Dam Rd • South Holland, IL 60473 • 219-972-9199

www.stevensoncrane.com