



### **Performance**

**Maximum Lifting Capacity**  
- 15,000 lbs (6,803 kg)

**Maximum Lift Height**  
- 30' 10" (9.4 m)

**Maximum Forward Reach**  
- 17' 3" (5.2 m) (at 24" Load Center)  
- 18' 9" (5.7 m) (at 42" Load Center)

**Below Grade Reach**  
- 2" (.1 m) Fully Retracted  
- 17" (.4 m) Extended

**Maximum Travel Speed**  
- 20 mph (32 km/h)

**Frame**  
- 20° of Leveling (10° right and left)

**Turning Radius**  
- 16' (4.9 m)

### **Standard Equipment**

**Engine**  
- Cummins 130 hp Tier III Turbo Diesel with Electronic Control and Protection  
- 32.5 Gallon (123.0 L) Fuel Tank

**Transmission**  
- Modulated Dana Powershift  
- Four Speed Forward  
- Three Speed Reverse

**Axles**  
- Four-wheel Drive  
- Dana Planetary Axles

**Steering**  
- Four-wheel, Two-wheel, and Crab Steer

**Brakes**  
- Oil-immersed, Inboard Disc Service Brakes  
- Integral Park Brake

**Tires**  
- 16.00 x 24, 16 ply

**Boom**  
- Automatic Fork Leveling Without Slave Cylinders  
- Two Wide-stance, Heavy-duty Lift Cylinders

**Cab**  
- Unmatched Visibility  
- Adjustable Suspension Seat with Seat Belt  
- Full Set of Gauges for Instant Machine Status  
- Fully Adjustable Right-side Arm Rest

**Hydraulics**  
- Piston Pump  
- Rapid Response Hydraulic System  
- Auxiliary Boom Tip Hydraulics  
- Quick Disconnect for Attachments  
- Single Joystick for all boom functions

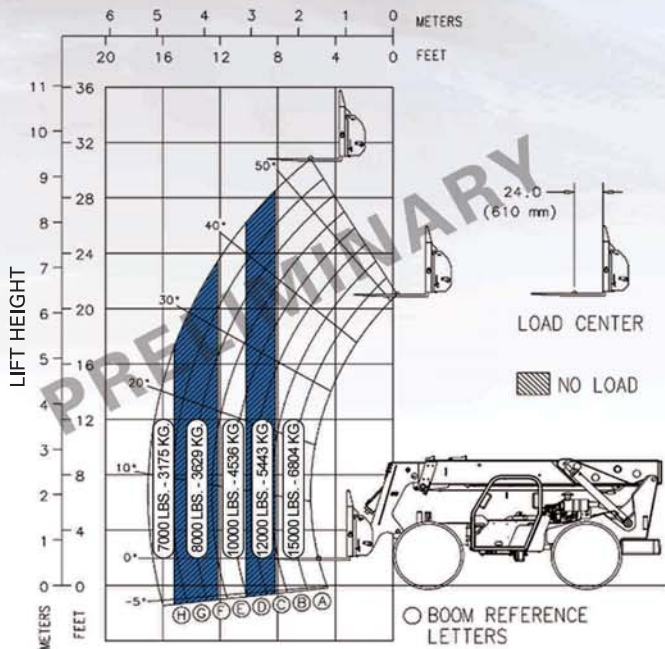
**Attachment**  
- 72" (1.8 m) Standard Fork Frame

### **Optional Equipment**

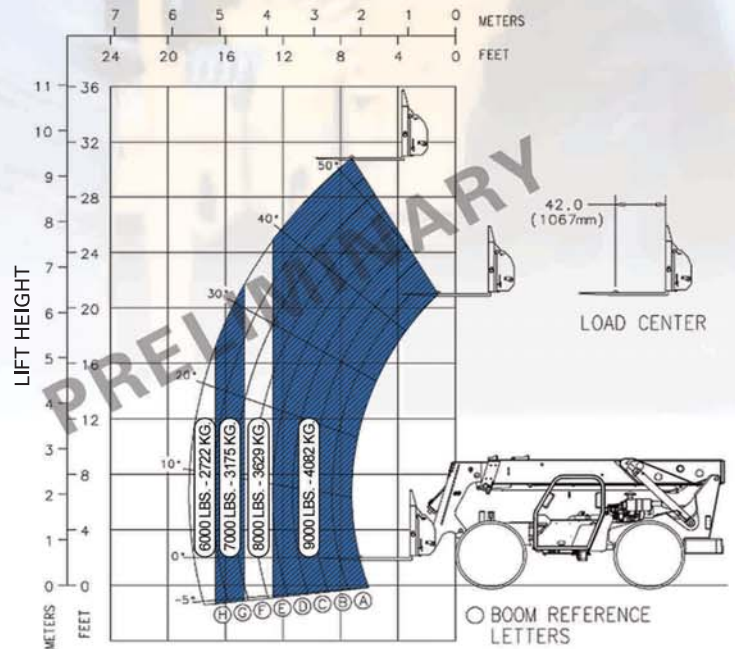
- GPS Equipment Management System  
- Light Packages  
- Enclosed Cab (HWD)  
- Additional Options Available



STANDARD FORK FRAME  
REACH



SCAFFOLD HANDLER  
REACH



## Dimensions

### Height

9' 3" (2.8 m) Boom Down

### Ground Clearance

20.5" (0.5 m)

### Length

21' 8" (6.6 m) to Fork Frame

### Curb Weight (approximate)

32,250 lbs (14,628 kg)

### Width

102" (2.6 m)

