



## Performance

**Maximum Lifting Capacity**  
-7,000 lbs (3,175 kg)

**Maximum Lift Height**  
-44'4" (13.5 m)

**Maximum Forward Reach**  
-30' 3" (9.2 m) (at 24" Load Center)

**Below Grade Reach**  
-3' 6" (1.01 m)

**Maximum Travel Speed**  
-20 mph (32 km/h)

**Frame**  
-24° of Leveling (12° right and left)  
-Rear Axle Stabilization System  
-Fits Under 8' (2.4 m) Doorway

**Turning Radius**  
-12' 6" (3.8 m)

## Warranty

**The Best in the Industry**  
-2 year/2,000 hour

## Standard Equipment

**Engine**  
-Cummins 110 hp Tier III Turbo Diesel  
with Electronic Control and Protection  
-34.8 Gallon (131.5 L) Fuel Tank

**Transmission**  
-Fully Modulated Carraro Powershift  
-Four Speed Forward and Reverse  
-Parking Brake Engaged Transmission  
Declutch

**Axles**  
-Four-wheel Drive  
-Carraro Outboard Planetary Axles

**Steering**  
-Four-wheel, Two-wheel, and Crab Steer

**Brakes**  
-Oil-immersed, Inboard Disc Service Brakes  
-Integral Park Brake

**Tires**  
-13.00 x 24, 14 ply

**Boom**  
-Automatic Fork Leveling Without Slave  
Cylinders  
-Two Wide-stance, Heavy-duty Lift Cylinders

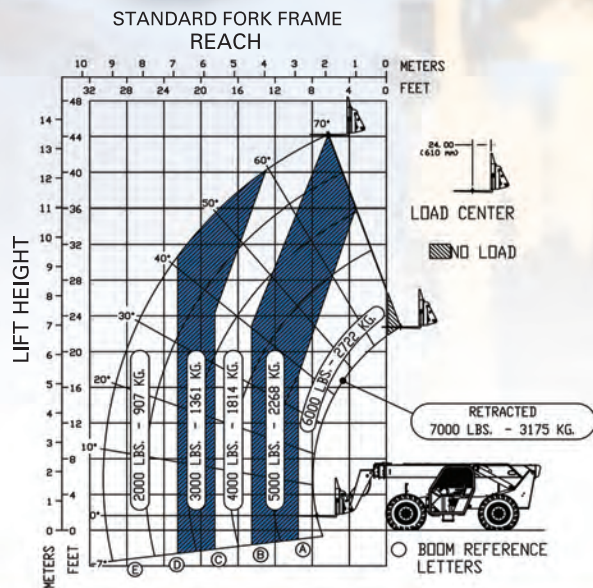
**Cab**  
-Unmatched Visibility  
-Adjustable Suspension Seat with Seat Belt  
-Full Set of Gauges for Instant Machine  
Status  
-Fully Adjustable Right-side Arm Rest

**Hydraulics**  
-Piston Pump  
-Rapid Response Hydraulic System  
-Auxiliary Boom Tip Hydraulics  
-Quick Disconnect for Attachments  
-Single Joystick for all boom functions

**Attachment**  
-48" (1.2 m) Standard Fork Carriage  
-2x4x48" Standard Pallet Forks

## Optional Equipment

-GPS Equipment Management System  
-Light Packages  
-Foam Filled Tires  
-Enclosed Cab (HWD)



### Dimensions

**Height**  
88.5" (2.3 m) Boom Down

**Length**  
22' (6.7 m) to Fork Frame

**Width**  
102" (2.6 m)

**Ground Clearance**  
21" (0.5 m)

**Curb Weight (approximate)**  
24,850 lbs (11,272 kg)

### Optional Attachments

- Pallet, Lumber and Block Forks
- Side Tilt Carriages ±10°
- Truss Boom
- Utility Buckets

### Contact Information

**Pettibone**  
1100 Superior Avenue  
Baraga, MI 49908  
800.GO.PETTIBONE

[gopettibone.com](http://gopettibone.com)

NOTE: The Company reserves the right to change specifications and prices without notice in order to follow its policy of constantly striving to manufacture a better product without incurring any liability to provide these new features on any units previously manufactured. Prices and specifications subject to change without notice.